

Anti-RRM2 Rabbit antibody



Catalog Number: 168821

Product name

Rabbit IgG

Anti-RRM2 Rabbit antibody

Applications

Specificity

WB, ICC/IF, IP

Human

Dilutions

Antibody description

1:1000

RRM2 Rabbit monoclonal antibody

1:50

Preparation

1:20

Antigen: Recombinant protein of human RRM2

Validations

Formulation

Supplied in 50nM Tris-Glycine(pH 7.4), 0.15M NaCl, 40%Glycerol, 0.01% sodium azide and 0.05% BSA.

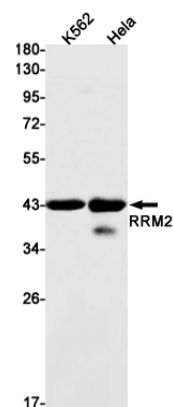
Storage

Store at 4°C short term. Aliquot and store at -20°C long term. Avoid freeze / thaw cycle.

Clonality

Monoclonal

Ig Type



Western blot detection of RRM2 in K562, HeLa cell lysates using RRM2 Rabbit mAb(1:1000 diluted). Predicted band size: 45kDa. Observed band size: 45kDa.