

# Anti-EPS15R Rabbit antibody



Catalog Number: 168806

## Product name

Anti-EPS15R Rabbit antibody

## Specificity

Human

## Antibody description

EPS15R Rabbit monoclonal antibody

## Preparation

Antigen: A synthetic peptide of human EPS15R

## Formulation

Supplied in 50nM Tris-Glycine(pH 7.4), 0.15M NaCl, 40%Glycerol, 0.01% sodium azide and 0.05% BSA.

## Storage

Store at 4°C short term. Aliquot and store at -20°C long term. Avoid freeze / thaw cycle.

## Clonality

Monoclonal

## Ig Type

Rabbit IgG

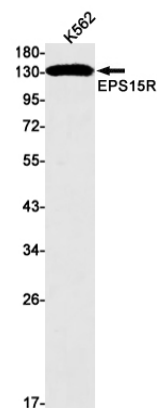
## Applications

WB, FC, IP

## Dilutions

WB: 1/5000

## Validations



Western blot detection of EPS15R in K562 cell lysates using EPS15R Rabbit mAb(1:1000 diluted). Predicted band size:94kDa. Observed band size:130kDa.