

# Anti-Cyclin E2 Rabbit antibody



Catalog Number: 168788

## Product name

Anti-Cyclin E2 Rabbit antibody

## Specificity

Human, Mouse

## Antibody description

Cyclin E2 Rabbit monoclonal antibody

## Preparation

Antigen: A synthetic peptide of human Cyclin E2

## Formulation

50nM Tris-Glycine(pH 7.4), 0.15M NaCl, 40%Glycerol, 0.01% sodium azide and 0.05% BSA.

## Storage

Store at 4°C short term. Store at -20°C long term. Avoid freeze / thaw cycle.

## Clonality

Monoclonal

## Ig Type

Rabbit IgG

## Applications

WB, IHC-P, ICC/IF, FC

## Dilutions

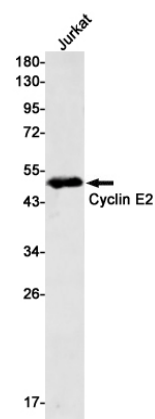
WB: 1/1000

IHC: 1/20

ICC/IF: 1/50

FC: 1/20

## Validations



Western blot detection of Cyclin E2 in Jurkat cell lysates using Cyclin E2 Rabbit mAb(1:500 diluted). Predicted band size:47kDa. Observed band size:47kDa.