

# Anti-GST3/GST pi Rabbit antibody



Catalog Number: 168731

## Product name

Anti-GST3/GST pi Rabbit antibody

## Specificity

Human, Mouse, Rat

## Antibody description

GST3/GST pi Rabbit monoclonal antibody

## Preparation

Antigen: A synthetic peptide of human GST3/GST pi

## Formulation

50nM Tris-Glycine(pH 7.4), 0.15M NaCl, 40%Glycerol, 0.01% sodium azide and 0.05% BSA.

## Storage

Store at 4°C short term. Store at -20°C long term. Avoid freeze / thaw cycle.

## Clonality

Monoclonal

## Ig Type

Rabbit IgG

## Applications

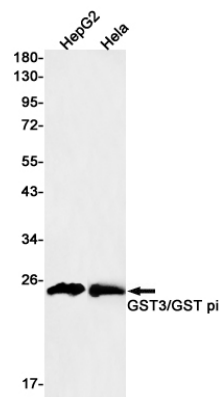
WB, IHC-P

## Dilutions

WB: 1/1000-1/5000

IHC: 1/20-1/100

## Validations



Western blot detection of GST3/GST pi in HepG2, HeLa cell lysates using GST3/GST pi Rabbit mAb(1:500 diluted). Predicted band size: 23kDa. Observed band size: 23kDa.