

Anti-Hsp60 Rabbit antibody



Catalog Number: 168730

Product name

Anti-Hsp60 Rabbit antibody

Specificity

Human, Mouse, Rat

Antibody description

Hsp60 Rabbit monoclonal antibody

Preparation

Antigen: A synthetic peptide of human Hsp60

Formulation

50nM Tris-Glycine(pH 7.4), 0.15M NaCl, 40%Glycerol, 0.01% sodium azide and 0.05% BSA.

Storage

Store at 4°C short term. Store at -20°C long term. Avoid freeze / thaw cycle.

Clonality

Monoclonal

Ig Type

Rabbit IgG

Applications

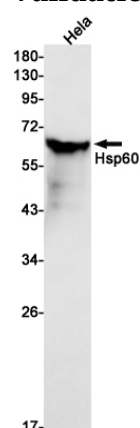
WB, IHC-P

Dilutions

WB: 1/2000

IHC: 1/50

Validations



Western blot detection of Hsp60 in HeLa cell lysates using Hsp60 Rabbit mAb(1:1000 diluted).Predicted band size:61 kDa.Observed band size:60kDa.