

# Anti-Phospho-p70 S6 Kinase beta/SRK (Ser371) Rabbit antibody



Catalog Number: 168666

## Product name

Monoclonal

Anti-Phospho-p70 S6 Kinase beta/SRK (Ser371)  
Rabbit antibody

## Ig Type

Rabbit IgG

## Specificity

Human, Mouse, Rat

## Applications

WB

## Antibody description

Phospho-p70 S6 Kinase beta/SRK (Ser371) Rabbit  
monoclonal antibody

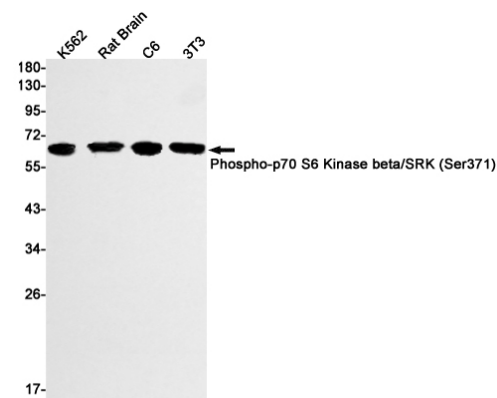
## Dilutions

1:1000

## Preparation

Antigen: A synthetic phosphopeptide  
corresponding to residues surrounding Ser371 of  
human P70 S6 Kinase beta

## Validations



## Formulation

Supplied in 50nM Tris-Glycine(pH 7.4), 0.15M  
NaCl, 40%Glycerol, 0.01% sodium azide and  
0.05% BSA.

Western blot detection of Phospho-p70 S6 Kinase  
beta/SRK (Ser371) in K562,Rat Brain,C6,3T3  
lysates using Phospho-p70 S6 Kinase beta/SRK  
(Ser371) Rabbit mAb(1:1000 diluted).Predicted  
band size:54kDa.Observed band size:60kDa.

## Storage

Store at 4°C short term. Aliquot and store at -20°C  
long term. Avoid freeze / thaw cycle.

## Clonality