

Anti-TAPP-1 Rabbit antibody



Catalog Number: 168614

Product name

Anti-TAPP-1 Rabbit antibody

Specificity

Human, Mouse, Rat

Antibody description

TAPP-1 Rabbit monoclonal antibody

Preparation

Antigen: A synthetic peptide of human TAPP-1

Formulation

Supplied in 50nM Tris-Glycine(pH 7.4), 0.15M NaCl, 40%Glycerol, 0.01% sodium azide and 0.05% BSA.

Storage

Store at 4°C short term. Aliquot and store at -20°C long term. Avoid freeze / thaw cycle.

Clonality

Monoclonal

Ig Type

Rabbit IgG

Applications

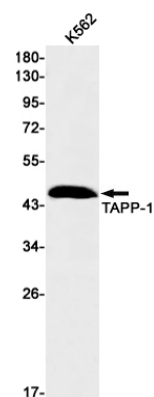
WB, IP

Dilutions

1:1000

1:20

Validations



Western blot detection of TAPP-1 in K562 cell lysates using TAPP-1 Rabbit mAb(1:1000 diluted).Predicted band size:46kDa.Observed band size:46kDa.