

Anti-Pyrophosphatase 1 Rabbit antibody



Catalog Number: 168561

Product name

Rabbit IgG

Anti-Pyrophosphatase 1 Rabbit antibody

Applications

Specificity

WB, FC, IP

Human, Mouse, Rat

Dilutions

Antibody description

1:1000

Pyrophosphatase 1 Rabbit monoclonal antibody

1:20

Preparation

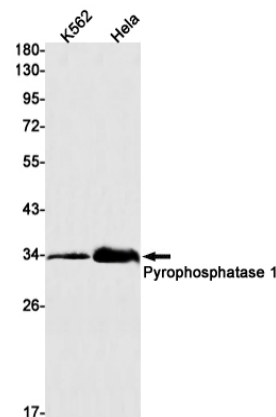
1:20

Antigen: A synthetic peptide of human Pyrophosphatase 1

Validations

Formulation

Supplied in 50nM Tris-Glycine(pH 7.4), 0.15M NaCl, 40%Glycerol, 0.01% sodium azide and 0.05% BSA.



Storage

Store at 4°C short term. Aliquot and store at -20°C long term. Avoid freeze / thaw cycle.

Clonality

Monoclonal

Western blot detection of Pyrophosphatase 1 in K562, HeLa cell lysates using Pyrophosphatase 1 Rabbit mAb(1:1000 diluted). Predicted band size: 33kDa. Observed band size: 33kDa.

Ig Type