

Anti-Cryptochrome I/CRY1 (2D6) Mouse antibody



Catalog Number: 168452

Product name

Anti-Cryptochrome I/CRY1 (2D6) Mouse antibody

Ig Type

Mouse IgG2b

Specificity

Human, Mouse, Rat, Monkey

Applications

WB

Antibody description

Cryptochrome I/CRY1 (2D6) Mouse monoclonal antibody

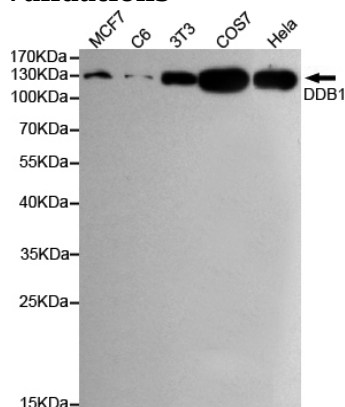
Dilutions

WB: 1/1000

Preparation

Antigen: Purified recombinant human DDB1 protein fragments expressed in E.coli.

Validations



Western blot detection of DDB1 in HeLa, MCF7, COS7, C6 and 3T3 cell lysates using DDB1 mouse mAb (1:1000 diluted), with Super ECL. Predicted band size: 127KDa. Observed band size: 127KDa.

Formulation

Ascites containing with 0.03% Proclin300 and 50% glycerol.

Storage

Store at 4°C short term. Store at -20°C long term. Avoid freeze / thaw cycle.

Clonality

Monoclonal