

# Anti-LPP (6F6) Mouse antibody



Catalog Number: 168424

## Product name

Anti-LPP (6F6) Mouse antibody

## Specificity

Human, Mouse, Monkey, Hamster

## Antibody description

LPP (6F6) Mouse monoclonal antibody

## Preparation

Antigen: Purified recombinant fragment of human LPP expressed in E. Coli.

## Formulation

Ascitic fluid containing 0.03% sodium azide.

## Storage

Store at 4°C short term. Store at -20°C long term. Avoid freeze / thaw cycle.

## Clonality

Monoclonal

## Ig Type

Mouse IgG1

## Applications

WB, IHC-P, ICC/IF, IP

## Dilutions

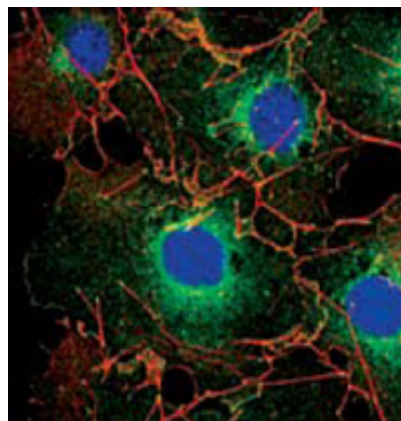
WB: 1/500 - 1/2000

IHC: 1/200 - 1/1000

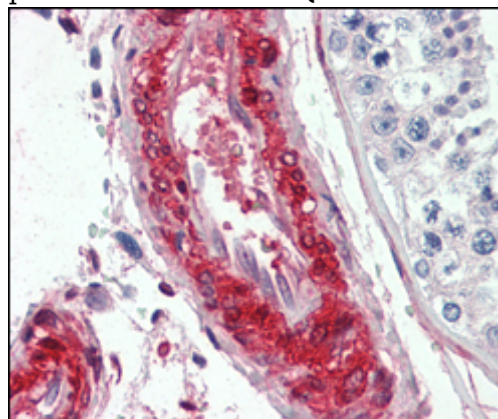
ICC: 1/200 - 1/1000

ELISA: 1/10000

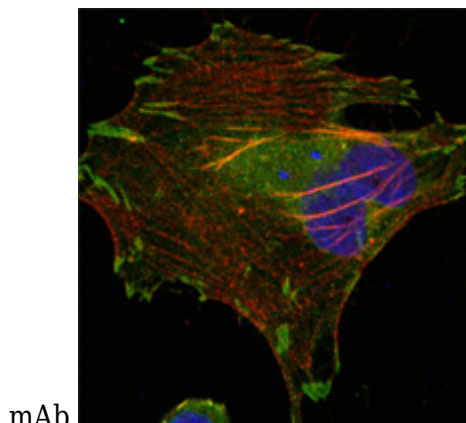
## Validations



Confocal immunofluorescence analysis of COS cells using LPP mouse mAb (green). Red: Actin filaments have been labeled using DY-554 phalloidin. Blue: DRAQ5 fluorescent DNA dye.



Immunohistochemical analysis of paraffin-embedded human vessels tissues using LPP mouse

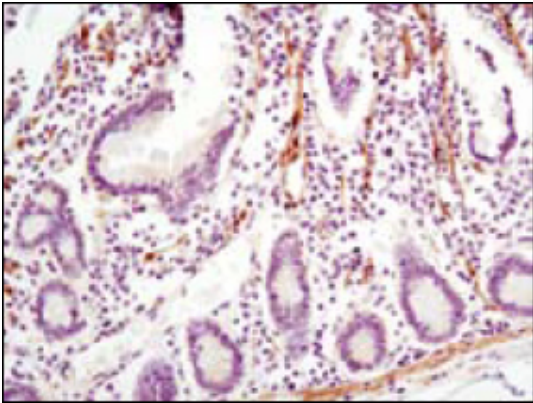


mAb.

Confocal immunofluorescence analysis of HeLa cells using LPP mouse mAb (green). Red: Actin filaments have been labeled using DY-554 phalloidin. Blue: DRAQ5 fluorescent DNA dye.

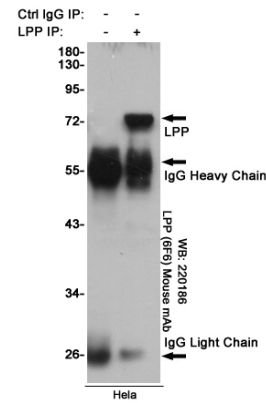
# Anti-LPP (6F6) Mouse antibody

Catalog Number: 168424

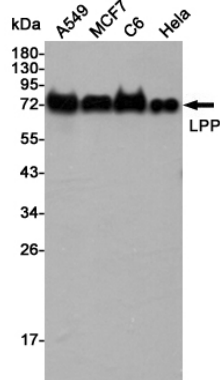


Immunohistochemical analysis of paraffin-embedded human small intestine using LPP mouse mAb with DAB staining.

Western blot detection of LPP in A549, MCF7, C6 and HeLa cell lysates using LPP mouse mAb (1:5000 diluted). Predicted band size: 66KDa. Observed band size: 75KDa.



Immunoprecipitation analysis of HeLa cell lysates using LPP (6F6) Mouse mAb.



mAb with DAB staining.