

Anti-HP1 gamma/CBX3 (5G10) Mouse antibody



Catalog Number: 168133

Product name

Anti-HP1 gamma/CBX3 (5G10) Mouse antibody

Specificity

Mouse, Human, Monkey, Hamster, Rat

Antibody description

HP1 gamma/CBX3 (5G10) Mouse monoclonal antibody

Preparation

Antigen: Purified recombinant human HP1-gamma protein fragments expressed in E.coli.

Formulation

PBS(pH 7.4) containing with 0.02% sodium azide and 50% glycerol.

Storage

Store at 4°C short term. Store at -20°C long term. Avoid freeze / thaw cycle.

Clonality

Monoclonal

Ig Type

Mouse IgG1

Applications

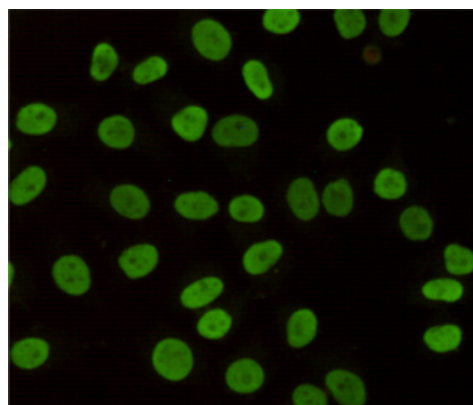
WB, ICC/IF, IP, IHC-P

Dilutions

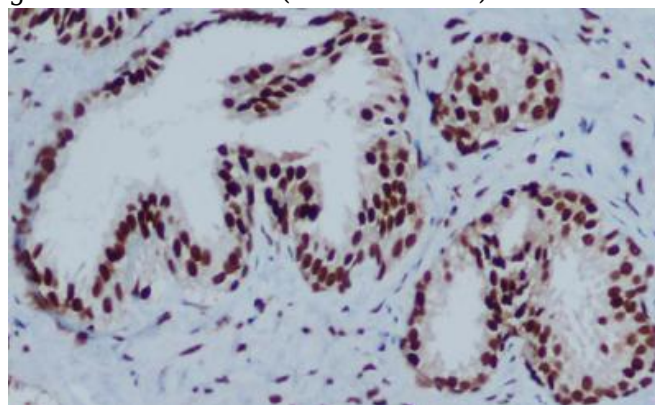
WB: 1/1000

;ICC: 1/200

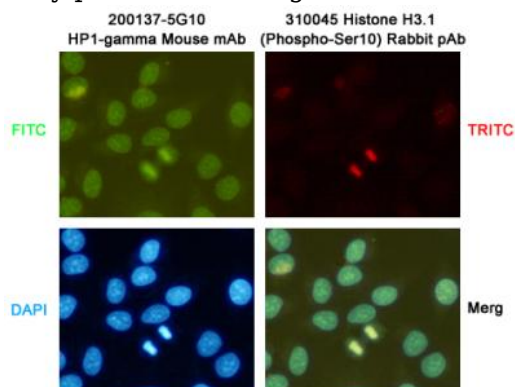
Validations



Immunocytochemistry staining of HeLa cells fixed with 4% Paraformaldehyde and using anti-HP1-gamma mouse mAb (dilution 1:200).



Immunohistochemical analysis of paraffin-embedded Prostate Cancer using HP1-gamma mouse mAb (1/200 dilution). Antigen retrieval was performed by pressure cooking in citrate buffer



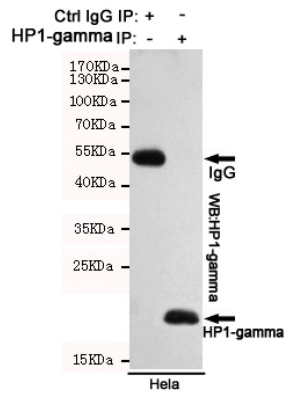
(pH 6.0).

Immunocytochemistry staining of HeLa cells fixed with -20u2103 Methanol and using HP1-gamma (168133,dilution 1:200) mouse mAb (green) and Histone H3.1 (Phospho-Ser10)(310045,dilution 1:200) Rabbit pAb (red). DAPI was used to stain

Anti-HP1 gamma/CBX3 (5G10) Mouse antibody

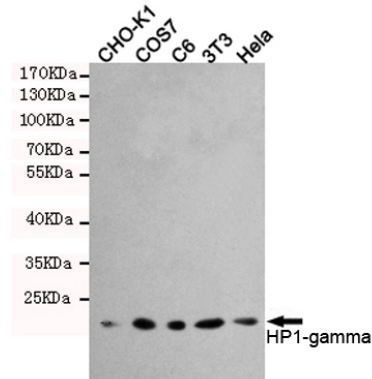


Catalog Number: 168133



nucleus(blue).

Immunoprecipitation analysis of HeLa cell lysates using HP1-gamma mouse mAb.



Western blot detection of HP1-gamma in HeLa,3T3,C6,COS7 and CHO-K1 cell lysates using HP1-gamma mouse mAb (1:1000 diluted).Predicted band size:22KDa.Observed band size:22KDa.