

# Anti-phospho-eIF4B (Ser406) Rabbit antibody



Catalog Number: 168042

## Product name

Monoclonal

Anti-phospho-eIF4B (Ser406) Rabbit antibody

## Ig Type

Rabbit IgG

## Specificity

Human, Mouse, Rat

## Applications

WB, IHC-P

## Antibody description

phospho-eIF4B (Ser406) Rabbit monoclonal antibody

## Dilutions

WB: 1/2000-1/10000

## Preparation

IHC: 1/20

Antigen: A synthetic phosphopeptide corresponding to residues surrounding Ser406 of human eIF4B

## Validations

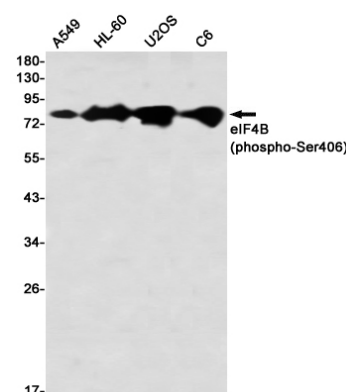
## Formulation

50nM Tris-Glycine(pH 7.4), 0.15M NaCl, 40%Glycerol, 0.01% sodium azide and 0.05% BSA

## Storage

Store at 4°C short term. Store at -20°C long term. Avoid freeze / thaw cycle.

## Clonality



Western blot detection of eIF4B (phospho-Ser406) in A549,HL-60,U2OS,C6 using eIF4B (phospho-Ser406) Rabbit mAb(1:1000 diluted)