

Anti-EFEMP1/Fibulin-3 Rabbit antibody



Catalog Number: 168025

Product name

Anti-EFEMP1/Fibulin-3 Rabbit antibody

Specificity

Human

Antibody description

EFEMP1/Fibulin-3 Rabbit monoclonal antibody

Preparation

Antigen: Recombinant protein of human EFEMP1/Fibulin-3

Formulation

50nM Tris-Glycine(pH 7.4), 0.15M NaCl, 40%Glycerol, 0.01% sodium azide and 0.05% BSA

Storage

Store at 4°C short term. Store at -20°C long term. Avoid freeze / thaw cycle.

Clonality

Monoclonal

Ig Type

IgG

Applications

WB, IHC-P, ICC/IF, FC, IP

Dilutions

WB: 1/1000

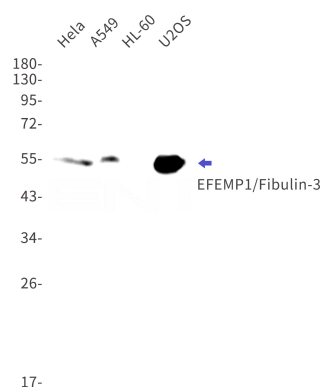
IHC: 1/50

ICC/IF: 1/50

FC: 1/50

IP: 1/20

Validations



Western blot detection of EFEMP1/Fibulin-3 in HeLa,A549,HL-60,U2OS cell lysates using EFEMP1/Fibulin-3 Rabbit mAb(1:1000 diluted).Predicted band size:55kDa.Observed band size:55kDa.