

Anti-phospho-PTS/PTPS (Ser19) Rabbit antibody



Catalog Number: 168013

Product name

Rabbit IgG

Anti-phospho-PTS/PTPS (Ser19) Rabbit antibody

Applications

Specificity

WB, IHC-P, ICC/IF, IP

Human

Dilutions

Antibody description

WB: 1/1000

phospho-PTS/PTPS (Ser19) Rabbit monoclonal antibody

IHC: 1/50

ICC/IF: 1/50

Preparation

IP: 1/20

Antigen: A synthetic phosphopeptide corresponding to residues surrounding Ser19 of human PTS/PTPS

Validations

Formulation

50nM Tris-Glycine(pH 7.4), 0.15M NaCl, 40%Glycerol, 0.01% sodium azide and 0.05% BSA

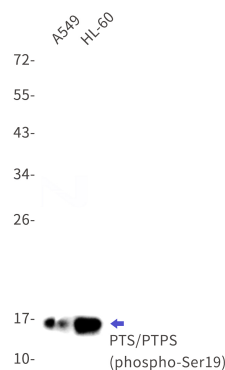
Storage

Store at 4°C short term. Store at -20°C long term. Avoid freeze / thaw cycle.

Clonality

Monoclonal

Ig Type



Western blot detection of PTS/PTPS (phospho-Ser19) in A549,HL-60 cell lysates using PTS/PTPS (phospho-Ser19) Rabbit mAb(1:1000 diluted).Predicted band size:16kDa.Observed band size:16kDa.