

Anti-SFT Rabbit antibody



Catalog Number: 168004

Product name

Anti-SFT Rabbit antibody

Specificity

Human, Mouse, Rat

Antibody description

SFT Rabbit monoclonal antibody

Preparation

Antigen: A synthetic peptide of human SFT

Formulation

50nM Tris-Glycine(pH 7.4), 0.15M NaCl, 40%Glycerol, 0.01% sodium azide and 0.05% BSA

Storage

Store at 4°C short term. Store at -20°C long term. Avoid freeze / thaw cycle.

Clonality

Monoclonal

Ig Type

Rabbit IgG

Applications

WB, IHC-P, FC, IP

Dilutions

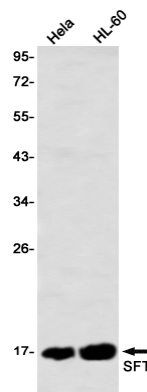
WB: 1/2000-1/10000

IHC: 1/20

FC: 1/20

IP: 1/20

Validations



Western blot detection of SFT in HeLa,HL-60 using SFT Rabbit mAb(1:1000 diluted)