

# Anti-EPS15R Rabbit antibody



Catalog Number: 167957

## Product name

Anti-EPS15R Rabbit antibody

## Specificity

Human, Mouse, Rat

## Antibody description

EPS15R Rabbit monoclonal antibody

## Preparation

Antigen: A synthetic peptide of human EPS15R

## Formulation

50nM Tris-Glycine(pH 7.4), 0.15M NaCl,  
40%Glycerol, 0.01% sodium azide and 0.05% BSA

## Storage

Store at 4°C short term. Store at -20°C long term.  
Avoid freeze / thaw cycle.

## Clonality

Monoclonal

## Ig Type

Rabbit IgG

## Applications

WB, ICC/IF, FC

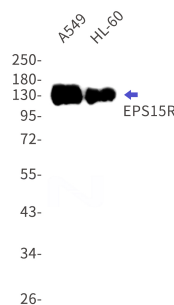
## Dilutions

WB: 1/1000-1/5000

ICC/IF: 1/50

FC: 1/20

## Validations



Western blot detection of EPS15R in A549,HL-60 cell lysates using EPS15R Rabbit mAb(1:1000 diluted).Predicted band size:94kDa.Observed band size:130kDa.