

Anti-Cellubrevin Rabbit antibody



Catalog Number: 167916

Product name

Rabbit IgG

Anti-Cellubrevin Rabbit antibody

Applications

Specificity

WB, ICC/IF, FC, IP

Human

Dilutions

Antibody description

WB: 1/1000

Cellubrevin Rabbit monoclonal antibody

ICC/IF: 1/100

Preparation

FC: 1/20

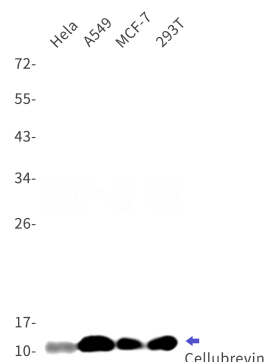
Antigen: Recombinant protein of human Cellubrevin

IP: 1/20

Formulation

50nM Tris-Glycine(pH 7.4), 0.15M NaCl, 40%Glycerol, 0.01% sodium azide and 0.05% BSA

Validations



Storage

Store at 4°C short term. Store at -20°C long term. Avoid freeze / thaw cycle.

Western blot detection of Cellubrevin in HeLa, A549, MCF-7, 293T cell lysates using Cellubrevin Rabbit mAb (1:1000 diluted). Predicted band size: 11 kDa. Observed band size: 11 kDa.

Clonality

Monoclonal

Ig Type