

Anti-FKBP6 Rabbit antibody



Catalog Number: 167741

Product name

Anti-FKBP6 Rabbit antibody

Specificity

Human, Mouse, Rat

Antibody description

FKBP6 Rabbit monoclonal antibody

Preparation

Antigen: A synthetic peptide of human FKBP6

Formulation

50nM Tris-Glycine(pH 7.4), 0.15M NaCl,
40%Glycerol, 0.01% sodium azide and 0.05% BSA

Storage

Store at 4°C short term. Store at -20°C long term.
Avoid freeze / thaw cycle.

Clonality

Monoclonal

Ig Type

IgG

Applications

WB, IHC-P, FC

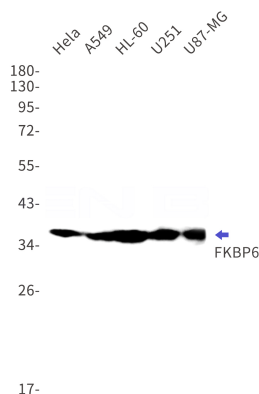
Dilutions

WB: 1/2000-1/10000

IHC: 1/50

FC: 1/20-1/100

Validations



Western blot detection of FKBP6 in HeLa,A549,HL-60,U251,U87-MG cell lysates using FKBP6 Rabbit mAb(1:1000 diluted).Predicted band size:37kDa.Observed band size:37kDa.