

# Anti-phospho-Histone H3 (Ser28) Rabbit antibody



Catalog Number: 167688

## Product name

Anti-phospho-Histone H3 (Ser28) Rabbit antibody

## Ig Type

Rabbit IgG

## Specificity

Human

## Applications

WB

## Antibody description

phospho-Histone H3 (Ser28) Rabbit monoclonal antibody

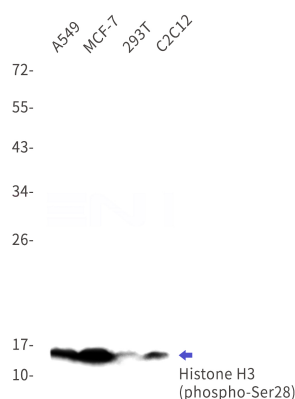
## Dilutions

WB: 1/2000

## Preparation

Antigen: A synthetic phosphopeptide corresponding to residues surrounding Ser28 of human Histone H3

## Validations



## Formulation

50nM Tris-Glycine(pH 7.4), 0.15M NaCl, 40%Glycerol, 0.01% sodium azide and 0.05% BSA

## Storage

Store at 4°C short term. Store at -20°C long term. Avoid freeze / thaw cycle.

## Clonality

Monoclonal

Western blot detection of phospho-Histone H3(Ser28) in A549,MCF-7,293T,C2C12 cell lysates using phospho-Histone H3(Ser28) Rabbit mAb(1:1000 diluted).Predicted band size:15kDa.Observed band size:15kDa.