

Anti-HINT1 Rabbit antibody



Catalog Number: 167673

Product name

Anti-HINT1 Rabbit antibody

Specificity

Human, Mouse, Rat

Antibody description

HINT1 Rabbit monoclonal antibody

Preparation

Antigen: A synthetic peptide of human HINT1

Formulation

50nM Tris-Glycine(pH 7.4), 0.15M NaCl, 40%Glycerol, 0.01% sodium azide and 0.05% BSA

Storage

Store at 4°C short term. Store at -20°C long term. Avoid freeze / thaw cycle.

Clonality

Monoclonal

Ig Type

IgG

Applications

WB, IHC-P, ICC/IF, FC, IP

Dilutions

WB: 1/1000

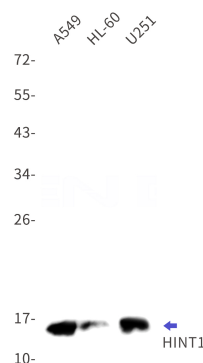
IHC: 1/50

ICC/IF: 1/50

FC: 1/20-1/100

IP: 1/20

Validations



Western blot detection of HINT1 in A549,HL-60,U251 cell lysates using HINT1 Rabbit mAb(1:1000 diluted).Predicted band size:14kDa.Observed band size:14kDa.