

Anti-Ezrin Rabbit antibody



Catalog Number: 167640

Product name

Anti-Ezrin Rabbit antibody

Specificity

Human

Antibody description

Ezrin Rabbit monoclonal antibody

Preparation

Antigen: A synthetic peptide of human Ezrin

Formulation

50nM Tris-Glycine(pH 7.4), 0.15M NaCl,
40%Glycerol, 0.01% sodium azide and 0.05% BSA

Storage

Store at 4°C short term. Store at -20°C long term.
Avoid freeze / thaw cycle.

Clonality

Monoclonal

Ig Type

Rabbit IgG

Applications

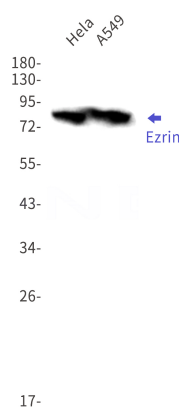
WB, IHC-P

Dilutions

WB: 1/2000-1/10000

IHC: 1/50

Validations



Western blot detection of Ezrin in HeLa,A549 cell lysates using Ezrin Rabbit mAb(1:1000 diluted).Predicted band size:69kDa.Observed band size:80kDa.