

Anti-MetRS/MARS Rabbit antibody



Catalog Number: 167558

Product name

Anti-MetRS/MARS Rabbit antibody

Specificity

Human, Rat

Antibody description

MetRS/MARS Rabbit polyclonal antibody

Preparation

Antigen: A synthetic peptide of human MARS

Formulation

Supplied in 50nM Tris-Glycine(pH 7.4), 0.15M NaCl, 40%Glycerol, 0.01% sodium azide and 0.05% BSA.

Storage

Store at -20°C. Stable for 12 months from date of receipt.

Clonality

Polyclonal

Ig Type

Rabbit IgG

Applications

WB, IHC-P, ICC/IF, IP

Dilutions

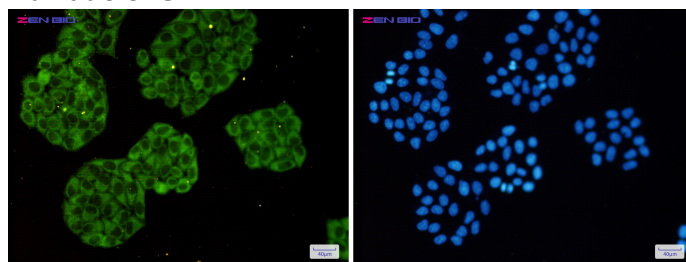
WB: 1/2000-1/10000

IHC: 1/20

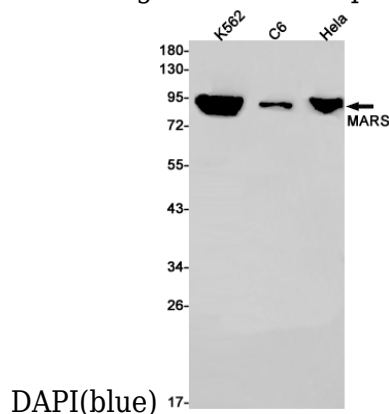
ICC/IF: 1/50

IP: 1/20

Validations



Immunocytochemistry of MARS(green) in HeLa cells using MARS Rabbit pAb at dilution 1/50, and



Western blot detection of MARS in K562, C6, HeLa cell lysates using MARS Rabbit pAb(1:1000 diluted). Predicted band size: 101kDa. Observed band size: 101kDa.