

## Product name

Anti-Phospho-Raf1 (Ser259) Rabbit antibody

## Specificity

Human, Mouse, Rat

## Antibody description

Phospho-Raf1 (Ser259) Rabbit polyclonal antibody

## Preparation

Antigen: A synthetic phosphopeptide corresponding to residues surrounding Ser259 of human Raf1

## Formulation

Supplied in 50nM Tris-Glycine(pH 7.4), 0.15M NaCl, 40%Glycerol, 0.01% sodium azide and 0.05% BSA.

## Storage

Store at -20°C. Stable for 12 months from date of receipt.

## Clonality

Polyclonal

## Ig Type

Rabbit IgG

## Applications

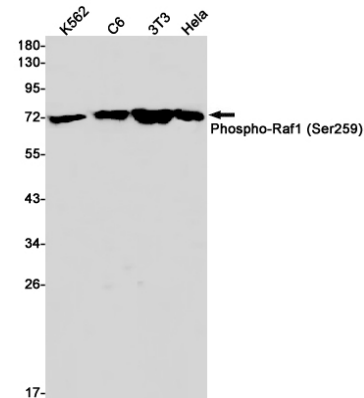
WB, IHC-P

## Dilutions

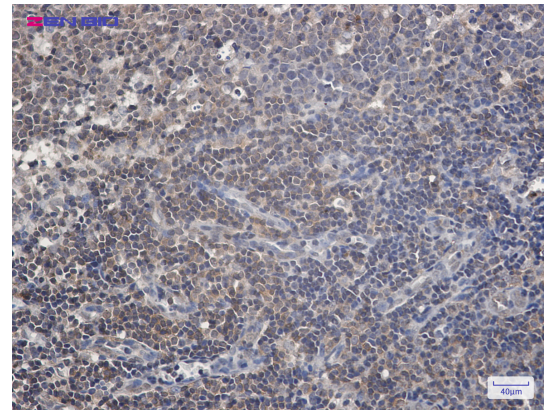
WB: 1/1000

IHC: 1/20

## Validations



Western blot detection of Phospho-Raf1 (Ser259) in K562,C6,3T3,HeLa cell lysates using Phospho-Raf1 (Ser259) Rabbit pAb(1:1000 diluted).Predicted band size:73kDa.Observed band size:73kDa.



Immunohistochemistry of Raf1 (Phospho-Ser259) in paraffin-embedded Human tonsil using Raf1 (Phospho-Ser259) Rabbit pAb at dilution 1/20