

Anti-Insulin Receptor Rabbit antibody



Catalog Number: 167447

Product name

Anti-Insulin Receptor Rabbit antibody

Specificity

Human, Rat

Antibody description

Insulin Receptor Rabbit polyclonal antibody

Preparation

Antigen: A synthesized peptide derived from human Insulin Receptor

Formulation

Rabbit IgG in phosphate buffered saline , pH 7.4, 150mM NaCl, 0.02% sodium azide and 50% glycerol.

Storage

Store at 4°C short term. Store at -20°C long term. Avoid freeze / thaw cycle.

Clonality

Polyclonal

Ig Type

Rabbit IgG

Applications

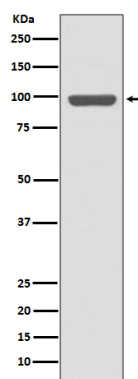
WB, ICC/IF

Dilutions

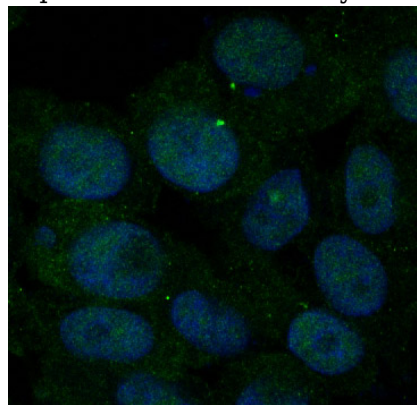
WB: 1/1000-1/2000

ICC/IF: 1/50-1/200

Validations



Western blot analysis of Insulin Receptor expression in HeLa cell lysate.



Immunofluorescent analysis of BxPC-3 cells, using Insulin Receptor Antibody.