

Anti-Ezrin Rabbit antibody



Catalog Number: 167403

Product name

Anti-Ezrin Rabbit antibody

IHC: 1/20-1/100

ICC/IF: 1/20-1/100

Specificity

Human

FC: 1/200

IP: 1/20

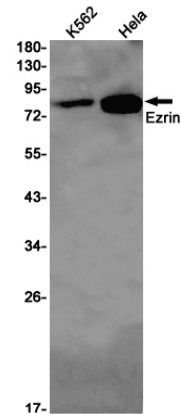
Antibody description

Ezrin Rabbit polyclonal antibody

Validations

Preparation

Antigen: A synthetic peptide of human Ezrin



Formulation

Supplied in 50nM Tris-Glycine(pH 7.4), 0.15M NaCl, 40%Glycerol, 0.01% sodium azide and 0.05% BSA.

Storage

Store at -20°C. Stable for 12 months from date of receipt.

Western blot detection of Ezrin in K562, HeLa cell lysates using Ezrin Rabbit pAb(1:1000 diluted). Predicted band size: 69kDa. Observed band size: 80kDa.

Clonality

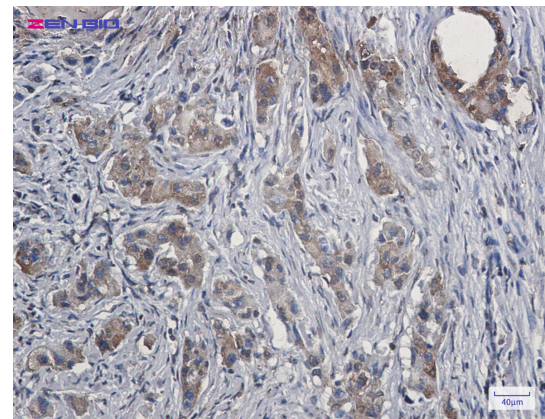
Polyclonal

Ig Type

Rabbit IgG

Applications

WB, IHC-P, ICC/IF, FC, IP



Dilutions

WB: 1/1000-1/5000

Immunohistochemistry of Ezrin in paraffin-embedded Human lung cancer tissue using Ezrin Rabbit pAb at dilution 1/20