

Anti-HP1 gamma Rabbit antibody



Catalog Number: 167366

Product name

Anti-HP1 gamma Rabbit antibody

IHC: 1/20-1/500

ICC/IF: 1/50

Specificity

Human, Mouse, Rat

FC: 1/50

IP: 1/20

Antibody description

HP1 gamma Rabbit polyclonal antibody

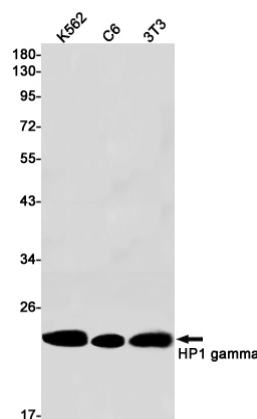
Validations

Preparation

Antigen: A synthetic peptide of mouse HP1 gamma

Formulation

Supplied in 50nM Tris-Glycine(pH 7.4), 0.15M NaCl, 40%Glycerol, 0.01% sodium azide and 0.05% BSA.



Storage

Store at -20°C. Stable for 12 months from date of receipt.

Western blot detection of HP1 gamma in K562,C6,3T3 cell lysates using HP1 gamma Rabbit pAb(1:1000 diluted).Predicted band size:21kDa.Observed band size:21kDa.

Clonality

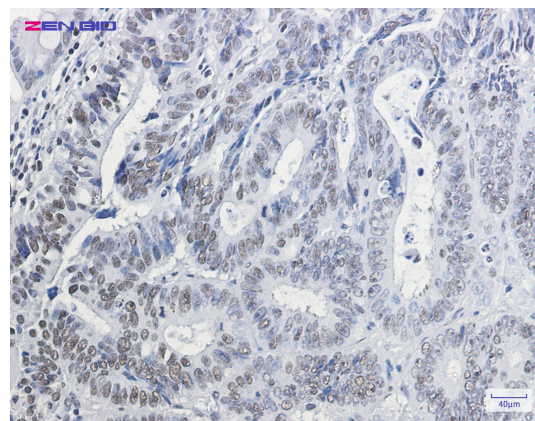
Polyclonal

Ig Type

Rabbit IgG

Applications

WB, IHC-P, ICC/IF, FC, IP



Dilutions

WB: 1/1000

Immunohistochemistry of HP1 gamma in paraffin-embedded Human colon cancer tissue using HP1 gamma Rabbit pAb at dilution 1/20