

# Anti-SCAI Rabbit antibody

Catalog Number: 167303

## Product name

Anti-SCAI Rabbit antibody

WB: 1/1000

IHC: 1/20

## Specificity

Human, Mouse, Rat

ICC/IF: 1/20

FC: 1/20

## Antibody description

SCAI Rabbit polyclonal antibody

## Preparation

Antigen: A synthetic peptide of human SCAI

## Formulation

Supplied in 50nM Tris-Glycine(pH 7.4), 0.15M NaCl, 40%Glycerol, 0.01% sodium azide and 0.05% BSA.

## Storage

Store at -20°C. Stable for 12 months from date of receipt.

## Clonality

Polyclonal

## Ig Type

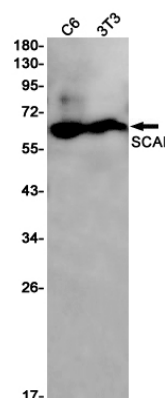
Rabbit IgG

## Applications

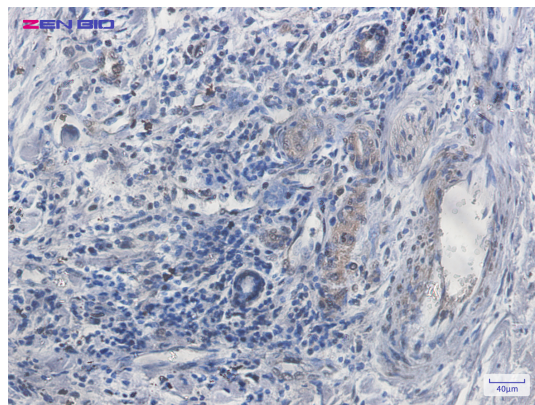
WB, IHC-P, ICC/IF, FC

## Dilutions

## Validations



Western blot detection of SCAI in C6,3T3 cell lysates using SCAI Rabbit pAb(1:1000 diluted).Predicted band size:70kDa.Observed band size:60kDa.



Immunohistochemistry of SCAI in paraffin-embedded Human lung cancer tissue using SCAI Rabbit pAb at dilution 1/20