

# Anti-CDX2 Rabbit antibody



Catalog Number: 167290

## Product name

Anti-CDX2 Rabbit antibody

## Specificity

Human, Rabbit

## Antibody description

CDX2 Rabbit polyclonal antibody

## Preparation

Antigen: A synthesized peptide derived from human CDX2

## Formulation

Rabbit IgG in phosphate buffered saline , pH 7.4, 150mM NaCl, 0.02% sodium azide and 50% glycerol.

## Storage

Store at 4°C short term. Store at -20°C long term. Avoid freeze / thaw cycle.

## Clonality

Polyclonal

## Ig Type

Rabbit IgG

## Applications

WB, IHC-P, ICC/IF, FC

## Dilutions

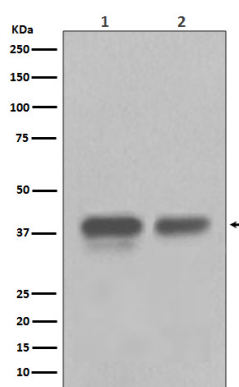
WB: 1/500-1/2000

IHC: 1/50-1/200

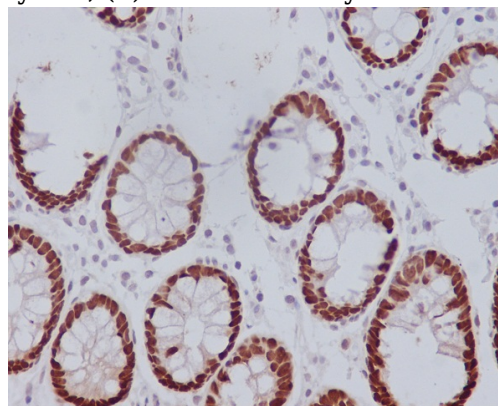
ICC/IF: 1/50-1/200

FC: 1/50

## Validations



Western blot analysis of CDX2 in (1) HEK293 cell lysate; (2) Colon cancer lysate.



Immunohistochemical analysis of paraffin-embedded human colon, using CDX2 Antibody.