

# Anti-POLR2E Rabbit antibody



Catalog Number: 167220

## Product name

Anti-POLR2E Rabbit antibody

## Specificity

Human, Mouse, Rat

## Antibody description

POLR2E Rabbit polyclonal antibody

## Preparation

Antigen: A synthetic peptide of human POLR2E

## Formulation

Supplied in 50nM Tris-Glycine(pH 7.4), 0.15M NaCl, 40%Glycerol, 0.01% sodium azide and 0.05% BSA.

## Storage

Store at -20°C. Stable for 12 months from date of receipt.

## Clonality

Polyclonal

## Ig Type

Rabbit IgG

## Applications

WB, IHC-P, FC

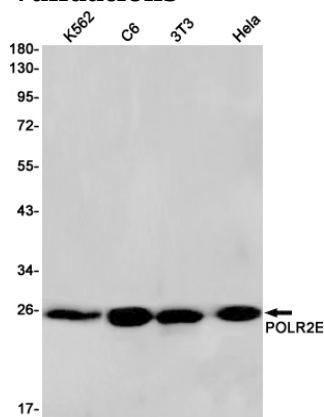
## Dilutions

WB: 1/2000

IHC: 1/20

FC: 1/20

## Validations



Western blot detection of POLR2E in K562,C6,3T3,Hela cell lysates using POLR2E Rabbit pAb(1:1000 diluted).Predicted band size:25kDa.Observed band size:25kDa.