

# Anti-Staufen Rabbit antibody



Catalog Number: 167211

## Product name

Anti-Staufen Rabbit antibody

WB: 1/1000-1/5000

IHC: 1/50

## Specificity

Human, Mouse, Rat

ICC/IF: 1/100

FC: 1/200-1/500

## Antibody description

Staufen Rabbit polyclonal antibody

## Preparation

Antigen: A synthetic peptide of human Staufen

## Formulation

Supplied in 50nM Tris-Glycine(pH 7.4), 0.15M NaCl, 40%Glycerol, 0.01% sodium azide and 0.05% BSA.

## Storage

Store at -20°C. Stable for 12 months from date of receipt.

## Clonality

Polyclonal

## Ig Type

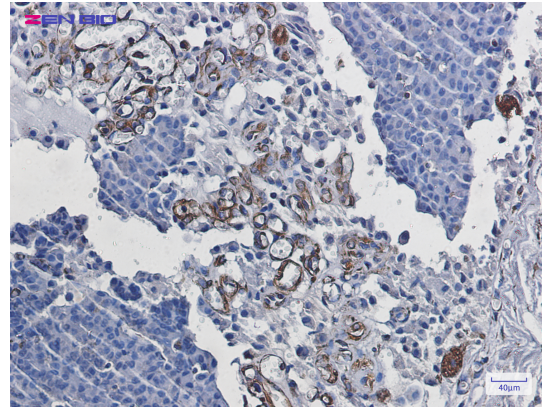
Rabbit IgG

## Applications

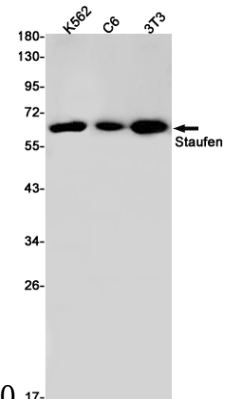
WB, IHC-P, ICC/IF, FC

## Dilutions

## Validations



Immunohistochemistry of Staufen in paraffin-embedded Human breast cancer tissue using



Staufen Rabbit pAb at dilution 1/50

Western blot detection of Staufen in K562,C6,3T3 cell lysates using Staufen Rabbit pAb(1:1000 diluted).Predicted band size:63kDa.Observed band size:63kDa.