

Anti-EzrinRabbit antibody



Catalog Number: 167139

Product name

Anti-EzrinRabbit antibody

Specificity

Human, Mouse, Rat

Antibody description

EzrinRabbit polyclonal antibody

Preparation

Antigen: Peptide sequence around aa. 565~569 (Y-K-T-L-R) derived from Human Ezrin.

Formulation

Supplied at 1.0mg/mL in phosphate buffered saline (without Mg²⁺ and Ca²⁺), pH 7.4, 150mM NaCl, 0.02% sodium azide and 50% glycerol.

Storage

Store at 4°C short term. Store at -20°C long term. Avoid freeze / thaw cycle.

Clonality

Polyclonal

Ig Type

Rabbit IgG

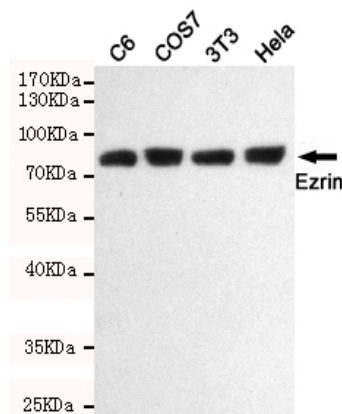
Applications

WB

Dilutions

WB:1/1000

Validations



Western blot detection of Ezrin (Ab-567) in HeLa, C6, 3T3 and COS7 cell lysates using Ezrin (Ab-567) rabbit pAb (1:1000 diluted). Predicted band size: 81KDa. Observed band size: 81KDa.