

Anti-ACTC1 Rabbit antibody

Catalog Number: 167077

Product name

Anti-ACTC1 Rabbit antibody

Specificity

Human, Mouse, Rat

Antibody description

ACTC1 Rabbit polyclonal antibody

Preparation

Antigen: Synthesized peptide derived from the Internal region of human α -SMA.

Formulation

Liquid in PBS containing 50% glycerol, 0.5% BSA and 0.02% sodium azide.

Storage

Store at 4°C short term. Store at -20°C long term. Avoid freeze / thaw cycle.

Clonality

Polyclonal

Ig Type

Rabbit IgG

Applications

WB, IHC-P, ELISA

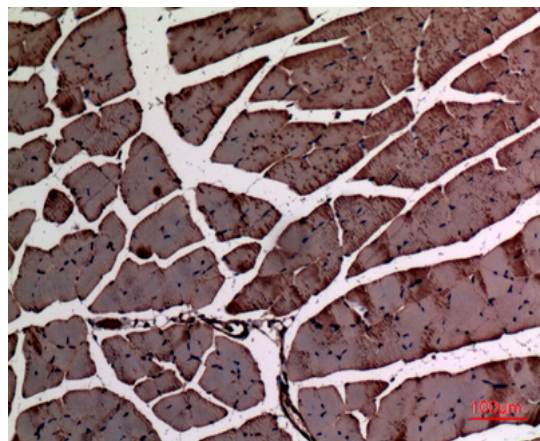
Dilutions

WB: 1/500 - 1/2000

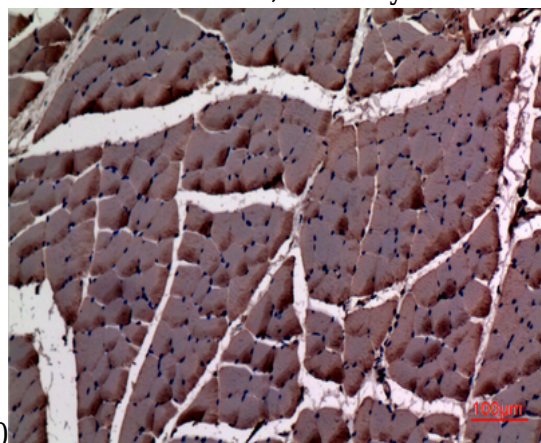
IHC-p: 1/100-300

ELISA: 1/20000

Validations

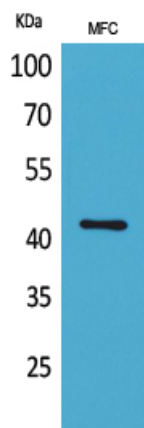


Immunohistochemical analysis of paraffin-embedded mouse-muscle, antibody was diluted at 1:100



1:100

Immunohistochemical analysis of paraffin-embedded rat-muscle, antibody was diluted at 1:100

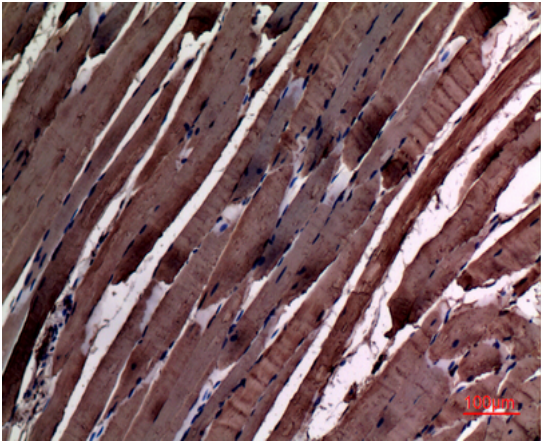


1:100

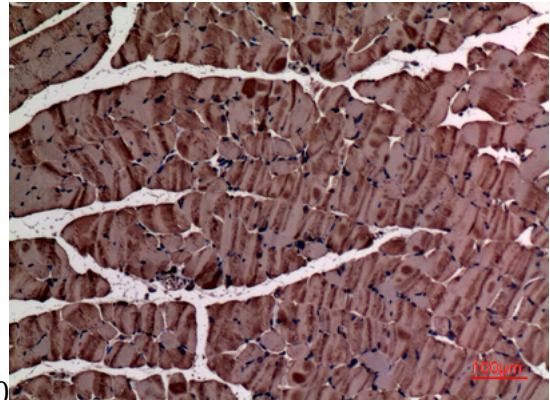
Western Blot analysis of MFC cells using α -SMA Polyclonal Antibody. Secondary antibody was diluted at 1:20000

Anti-ACTC1 Rabbit antibody

Catalog Number: 167077



Immunohistochemical analysis of paraffin-embedded rat-muscle, antibody was diluted at



1:100

Immunohistochemical analysis of paraffin-embedded mouse-muscle, antibody was diluted at 1:100