

Anti-MDH2 Rabbit antibody



Catalog Number: 167054

Product name

Anti-MDH2 Rabbit antibody

Specificity

Human, Mouse, Rat

Antibody description

MDH2 Rabbit polyclonal antibody

Preparation

Antigen: A synthetic peptide of human MDH2

Formulation

Supplied in 50nM Tris-Glycine(pH 7.4), 0.15M NaCl, 40%Glycerol, 0.01% sodium azide and 0.05% BSA.

Storage

Store at -20°C. Stable for 12 months from date of receipt.

Clonality

Polyclonal

Ig Type

Rabbit IgG

Applications

WB, IHC-P, FC

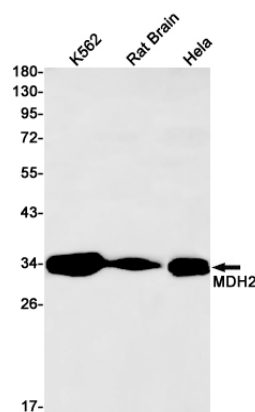
Dilutions

WB: 1/2000-1/10000

IHC: 1/20

FC: 1/20

Validations



Western blot detection of MDH2 in K562, Rat Brain, HeLa cell lysates using MDH2 Rabbit pAb(1:1000 diluted). Predicted band size: 36kDa. Observed band size: 36kDa.