

Anti-PHAPI2/APRIL Rabbit antibody



Catalog Number: 167018

Product name

Anti-PHAPI2/APRIL Rabbit antibody

Specificity

Human, Mouse, Rat

Antibody description

PHAPI2/APRIL Rabbit polyclonal antibody

Preparation

Antigen: A synthetic peptide of human PHAPI2

Formulation

Supplied in 50nM Tris-Glycine(pH 7.4), 0.15M NaCl, 40%Glycerol, 0.01% sodium azide and 0.05% BSA.

Storage

Store at -20°C. Stable for 12 months from date of receipt.

Clonality

Polyclonal

Ig Type

Rabbit IgG

Applications

WB, IHC-P, ICC/IF, FC

Dilutions

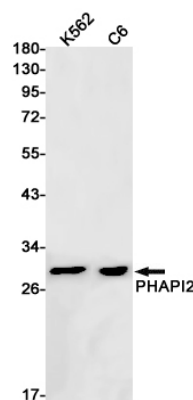
WB: 1/1000

IHC: 1/20

ICC/IF: 1/50

FC: 1/20

Validations



Western blot detection of PHAPI2 in K562, C6 cell lysates using PHAPI2 Rabbit pAb(1:1000 diluted). Predicted band size: 29kDa. Observed band size: 29kDa.