

# Anti-MLKL Rabbit antibody



Catalog Number: 166880

## Product name

Anti-MLKL Rabbit antibody

## Specificity

Human

## Antibody description

MLKL Rabbit polyclonal antibody

## Preparation

Antigen: A synthesized peptide derived from human MLKL

## Formulation

Rabbit IgG in phosphate buffered saline , pH 7.4, 150mM NaCl, 0.02% sodium azide and 50% glycerol.

## Storage

Store at 4°C short term. Store at -20°C long term. Avoid freeze / thaw cycle.

## Clonality

Polyclonal

## Ig Type

Rabbit IgG

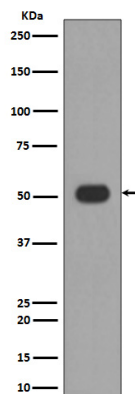
## Applications

WB, IHC-P

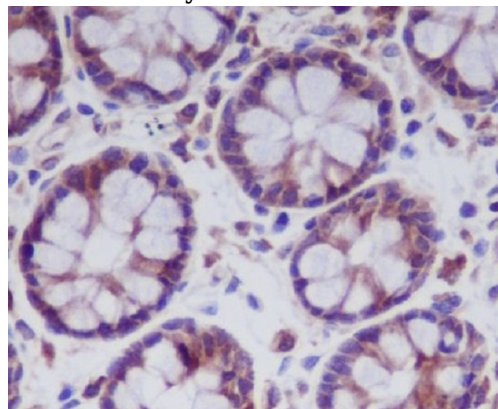
## Dilutions

WB: 1/500-1/2000 IHC 50-200

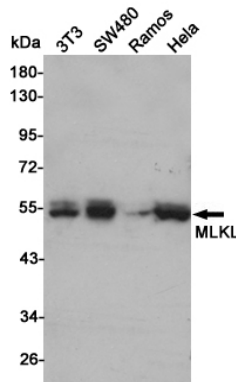
## Validations



Western blot analysis of MLKL expression in HUVEC cell lysate.



Immunohistochemical analysis of paraffin-embedded human colon, using MLKL Antibody.



Western blot analysis of MLKL expression in 3T3, SW480, Ramos and HeLa cell lysates using MLKL antibody at 1/1000 dilution. Predicted band size: 54 kDa. Observed band size: 54 kDa.