

Anti-GPX4 Rabbit antibody



Catalog Number: 166812

Product name

Anti-GPX4 Rabbit antibody

Specificity

Human, Mouse, Rat

Antibody description

GPX4 Rabbit polyclonal antibody

Preparation

Antigen: A synthesized peptide derived from human GPX4

Formulation

Rabbit IgG in phosphate buffered saline , pH 7.4, 150mM NaCl, 0.02% sodium azide and 50% glycerol.

Storage

Store at 4°C short term. Store at -20°C long term. Avoid freeze / thaw cycle.

Clonality

Polyclonal

Ig Type

Rabbit IgG

Applications

WB, IHC-P, ICC/IF

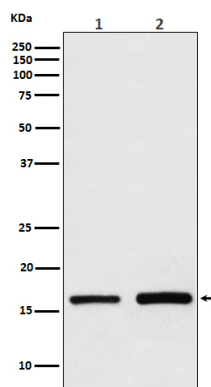
Dilutions

WB: 1/500-1/2000

IHC: 1/50-1/200

ICC/IF: 1/50-1/200

Validations



Western blot analysis of GPX4 expression in (1) HepG2 cell lysate; (2) Mouse testis lysate.