

Anti-CaMKII (pan) Rabbit antibody



Catalog Number: 166779

Product name

Anti-CaMKII (pan) Rabbit antibody

Specificity

Human, Mouse, Rat

Antibody description

CaMKII (pan) Rabbit polyclonal antibody

Preparation

Antigen: A synthesized peptide derived from human CaMKII

Formulation

Rabbit IgG in phosphate buffered saline , pH 7.4, 150mM NaCl, 0.02% sodium azide and 50% glycerol.

Storage

Store at 4°C short term. Store at -20°C long term. Avoid freeze / thaw cycle.

Clonality

Polyclonal

Ig Type

Rabbit IgG

Applications

WB, IHC-P, ICC/IF

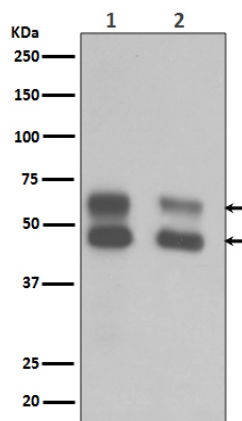
Dilutions

WB: 1/500-1/2000

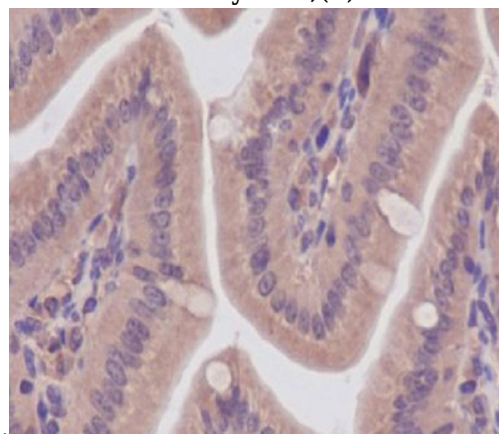
IHC: 1/50-1/200

ICC/IF: 1/50-1/200

Validations

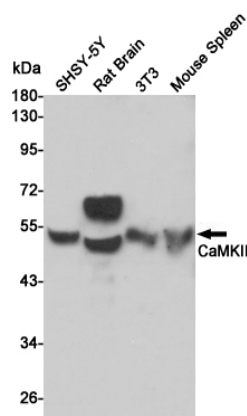


Western blot analysis of CaMKII expression in (1) Mouse brain tissue lysate ;(2) Rat brain tissue



lysate.

Immunohistochemical analysis of paraffin-embedded mouse colon, using CaMKII Antibody.

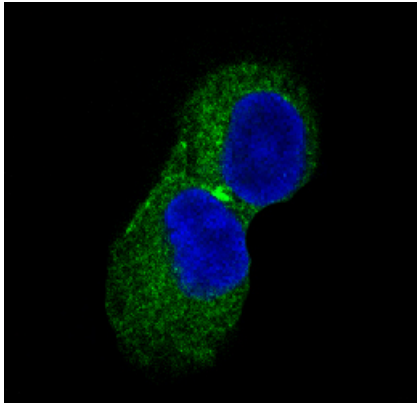


Western blot analysis of CaMKII expression in SHSY-5Y, Rat Brain, 3T3 and Mouse Spleen cell lysates using CaMKII antibody at 1/1000 dilution. Predicted band size: 45, 60 kDa. Observed band size: 45, 60 kDa.

Anti-CaMKII (pan) Rabbit antibody



Catalog Number: 166779



Immunofluorescent analysis of PC-12 cells, using CaMKII Antibody .