

Anti-SF3B3 (C-term) Rabbit antibody



Catalog Number: 166744

Product name

Anti-SF3B3 (C-term) Rabbit antibody

Specificity

Human

Antibody description

SF3B3 (C-term) Rabbit polyclonal antibody

Preparation

Antigen: This SF3B3 antibody is generated from rabbits immunized with a KLH conjugated synthetic peptide between 1046-1074 amino acids from the C-terminal region of human SF3B3.

Formulation

Purified polyclonal antibody supplied in PBS with 0.09% (W/V) sodium azide. This antibody is purified through a protein A column, followed by peptide affinity purification.

Clonality

Polyclonal

Ig Type

Rabbit IgG

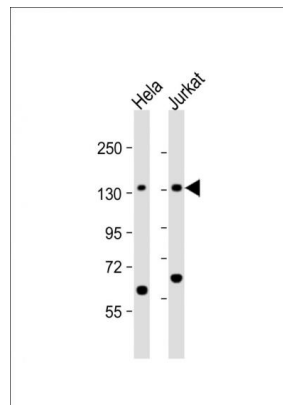
Applications

WB

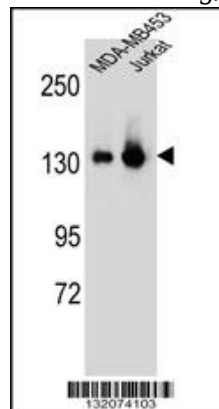
Dilutions

WB::1:1000

Validations



All lanes: Anti-SF3B3 Antibody (C-term) at 1:1000 dilution
Lane 1: HeLa whole cell lysate
Lane 2: Jurkat whole cell lysate
Lysates/proteins at 20 µg per lane.
Secondary: Goat Anti-Rabbit IgG, (H+L), Peroxidase conjugated at 1/10000 dilution.
Predicted band size: 136 kDa
Blocking/Dilution buffer: 5% NFDm/TBST.



SF3B3 Antibody (C-term) (Cat. #166744) western blot analysis in MDA-MB453, Jurkat cell line lysates (35 µg/lane). This demonstrates the SF3B3 antibody detected the SF3B3 protein (arrow).