

Anti-Phospho-FAK (Tyr397) Rabbit antibody



Catalog Number: 166674

Product name

Anti-Phospho-FAK (Tyr397) Rabbit antibody

Ig Type

Rabbit IgG

Specificity

Human, Mouse, Rat

Applications

WB, ICC/IF

Antibody description

Phospho-FAK (Tyr397) Rabbit polyclonal antibody

Dilutions

WB: 1/500-1/2000

Preparation

Antigen: A synthesized peptide derived from human Phospho-FAK (Y397)

ICC/IF: 1/50-1/200

Formulation

Rabbit IgG in phosphate buffered saline , pH 7.4, 150mM NaCl, 0.02% sodium azide and 50% glycerol.

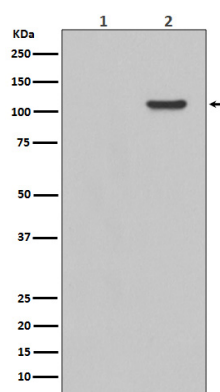
Storage

Store at 4°C short term. Store at -20°C long term. Avoid freeze / thaw cycle.

Clonality

Polyclonal

Validations



Western blot analysis of Phospho-FAK (Y397) expression in EGF treated 293 whole cell lysates. The lane on the left is treated with the antigen-specific peptide.