

# ANT1/ANT2/ANT3/ANT4 Polyclonal Antibody



Catalog Number: 162958

## Product name

Rabbit IgG

ANT1/ANT2/ANT3/ANT4 Polyclonal Antibody

## Applications

## Specificity

WB

Mouse, Rat

## Dilutions

## Antibody description

WB 1:500 - 1:2000

Polyclonal antibody to ANT1/ANT2/ANT3/ANT4

## Validations

## Preparation

Antigen: A synthetic peptide corresponding to a sequence within amino acids 200 to the C-terminus of human ANT1 (NP\_001142.2).

## Formulation

PBS with 0.02% sodium azide, 50% glycerol, pH7.3.

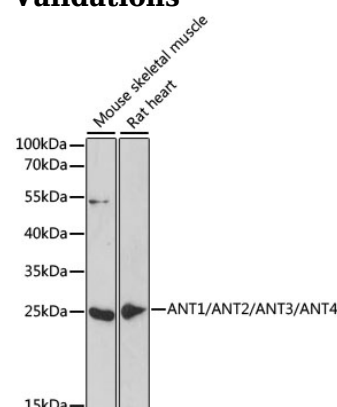
## Storage

Store at -20°C. Avoid freeze / thaw cycles.

## Clonality

Polyclonal

## Ig Type



Western blot - ANT1/ANT2/ANT3/ANT4 Polyclonal Antibody

Western blot analysis of extracts of various cell lines, using ANT1/ANT2/ANT3/ANT4 antibody at 1:1000 dilution. Secondary antibody: HRP Goat Anti-Rabbit IgG (H+L) at 1:10000 dilution. Lysates/proteins: 25ug per lane. Blocking buffer: 3% nonfat dry milk in TBST. Detection: ECL Enhanced Kit. Exposure time: 150s.