

Anti-SMARCC2 antibody



Catalog Number: 142558

Product name

Anti-SMARCC2 antibody

Specificity

Human SMARCC2

Antibody description

Rabbit Polyclonal to Human SMARCC2

Preparation

Produced in rabbits immunized with a synthetic peptide corresponding to the C-terminus of the Human SMARCC2, and purified by antigen affinity chromatography.

Formulation

0.2 µm filtered solution in PBS

Storage

This antibody can be stored at 2°C-8°C for one month without detectable loss of activity. Antibody products are stable for twelve months from date of receipt when stored at -20°C to -80°C.

Preservative-Free.

Sodium azide is recommended to avoid contamination (final concentration 0.05%-0.1%). It

is toxic to cells and should be disposed of properly. Avoid repeated freeze-thaw cycles.

Clonality

Polyclonal

Ig Type

Rabbit IgG

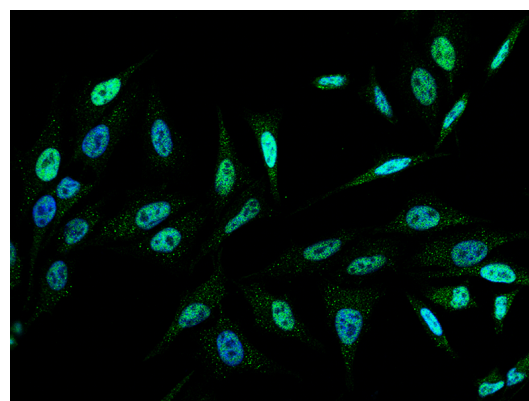
Applications

ICC/IF, IF

Dilutions

ICC/IF: 0.5-3 µg/mL

Validations



Human SMARCC2 Immunofluorescence(IF) 14627