

# Anti-EPN3 antibody



Catalog Number: 142557

## Product name

Anti-EPN3 antibody

## Specificity

Human EPN3

## Antibody description

Rabbit Polyclonal to Human EPN3

## Preparation

Produced in rabbits immunized with a synthetic peptide corresponding to the center region of the Human EPN3, and purified by antigen affinity chromatography.

## Formulation

0.2 µm filtered solution in PBS

## Storage

This antibody can be stored at 2°C-8°C for one month without detectable loss of activity. Antibody products are stable for twelve months from date of receipt when stored at -20°C to -80°C.

Preservative-Free.

Sodium azide is recommended to avoid contamination (final concentration 0.05%-0.1%). It

is toxic to cells and should be disposed of properly. Avoid repeated freeze-thaw cycles.

## Clonality

Polyclonal

## Ig Type

Rabbit IgG

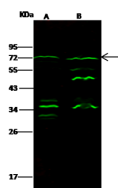
## Applications

WB

## Dilutions

WB: 5-20 µg/ml

## Validations



Items	Lanes	A	B
Sample (whole cell lysate)		MCF7	K562
Sample Volume (µg/lane)		30	30
Gel		13% SDS-PAGE reducing gel	
Recommended Concentration		5-20 µg/ml	
Secondary Antibody		Dylight 800 labeled Antibody To Rabbit IgG (1:1), at 1:5000 dilution.	
Explanation		Developed using Odyssey imaging system. Predicted band size : 68 kDa Observed band size : 72 kDa Additional bands at : 32 kDa , 35 kDa , 38 kDa , 49 kDa and 55 kDa (We are unsure as to the identity of these extra bands.)	

Human EPN3 Western blot (WB) 14625