

# Anti-TTF2 antibody



Catalog Number: 142541

## Product name

Anti-TTF2 antibody

## Specificity

Human TTF2

## Antibody description

Rabbit Polyclonal to Human TTF2

## Preparation

Produced in rabbits immunized with a synthetic peptide corresponding to the N-terminus of the Human TTF2, and purified by antigen affinity chromatography.

## Formulation

0.2 µm filtered solution in PBS

## Storage

This antibody can be stored at 2°C-8°C for one month without detectable loss of activity. Antibody products are stable for twelve months from date of receipt when stored at -20°C to -80°C.

Preservative-Free.

Sodium azide is recommended to avoid contamination (final concentration 0.05%-0.1%). It is toxic to cells and should be disposed of properly. Avoid repeated freeze-thaw cycles.

## Clonality

Polyclonal

## Ig Type

Rabbit IgG

## Applications

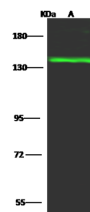
WB, IP

## Dilutions

WB: 5-20 µg/ml

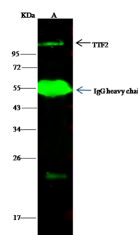
IP: 4-8 µl/mg of lysate

## Validations



Items	Lanes
Sample (whole cell lysate)	Jurkat
Sample Volume (µg/lane)	30
Cell	7.5% SDS-PAGE reducing gel
Recommended Concentration	5-20 µg/ml
Secondary Antibody	DyLight 800 labeled Antibody To Rabbit IgG (H+L), at 1:5000 dilution.
Developed using Odyssey imaging system.	
Explanation	Predicted band size : 130 kDa Observed band size : 145 kDa

## Human TTF2 Western blot (WB) 14622



Items	Lanes
Sample (whole cell lysate)	Hela
Sample quantity	0.5 mg
IP antibody quantity	4 µl
Protein G agarose	15 µl of 50% Protein G agarose
Cell	13% SDS-PAGE reducing gel
Primary antibody	KLJ1-SMCC-SIN0A14571/KLJ1-SMCC-SIN0A1681 antibody at 10 µg/ml
Secondary antibody	DyLight 800-labeled antibody to rabbit IgG (H+L), at 1:5000 dilution

## Human TTF2 Immunoprecipitation(IP) 14623