

Anti-CMBL antibody



Catalog Number: 142497

Product name

Anti-CMBL antibody

Immunogen

[Human CMBL \(His Tag\) recombinant protein](#)

Specificity

Human CMBL

Antibody description

Rabbit Polyclonal to Human CMBL

Preparation

Produced in rabbits immunized with purified, recombinant Human CMBL. CMBL specific IgG was purified by Human CMBL affinity chromatography.

Formulation

0.2 µm filtered solution in PBS

Storage

This antibody can be stored at 2°C-8°C for one month without detectable loss of activity. Antibody products are stable for twelve months from date of receipt when stored at -20°C to -80°C.

Preservative-Free.

Sodium azide is recommended to avoid contamination (final concentration 0.05%-0.1%). It is toxic to cells and should be disposed of properly. Avoid repeated freeze-thaw cycles.

Clonality

Polyclonal

Ig Type

Rabbit IgG

Applications

WB, ELISA, IP

Dilutions

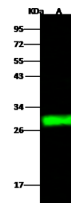
WB: 5-20 µg/ml

ELISA: 0.1-0.2 µg/ml

This antibody can be used at 0.1-0.2 µg/ml with the appropriate secondary reagents to detect Human CMBL.

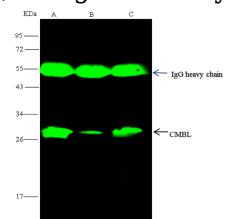
IP: 1-4 µl/mg of lysate

Validations



Lanes	A
Items	
Sample (whole cell lysate)	HeLa
Sample Volume (µg/lane)	30
Gel	13% SDS-PAGE reducing gel
Recommended Concentration	5-20 µg/ml
Secondary Antibody	Dylight 800-labeled Antibody to Rabbit IgG (D1-1), at 1:5000 dilution. Developed using Odyssey imaging system.
Explanation	Predicted band size : 28 kDa Observed band size : 29 kDa

CMBL Antibody, Rabbit PAb, Antigen Affinity



Lanes	A	B	C
Items			
Sample (whole cell lysate)	HeLa	Jurkat	HepG2
Sample quantity	0.5 mg		
IP antibody quantity	4 µL		
Protein G agarose	15 µl of 50% Protein G Agarose		
Gel	13% SDS-PAGE reducing gel		
Primary antibody	His-3C-CMBL antibody at 10 µg/ml		
Secondary antibody	Dylight 800-labeled antibody to rabbit IgG (D1-1), at 1:5000 dilution		

Purified, Western blot

CMBL Antibody, Rabbit PAb, Antigen Affinity

Purified, Immunoprecipitation