

# Anti-UBE2D1 antibody



Catalog Number: 142413

## Product name

Anti-UBE2D1 antibody

## Immunogen

[Human UBE2D1 \(His Tag\) recombinant protein](#)

## Specificity

Human UBE2D1

## Antibody description

Mouse Monoclonal to Human UBE2D1

## Preparation

This antibody was produced from a hybridoma resulting from the fusion of a mouse myeloma with B cells obtained from a mouse immunized with purified, recombinant Human UBE2D1. The IgG fraction of the cell culture supernatant was purified by Protein A affinity chromatography.

## Formulation

0.2 µm filtered solution in PBS

## Storage

This antibody can be stored at 2°C-8°C for one month without detectable loss of activity. Antibody products are stable for twelve months from date of receipt when stored at -20°C to -80°C.

Preservative-Free.

Sodium azide is recommended to avoid contamination (final concentration 0.05%-0.1%). It is toxic to cells and should be disposed of properly. Avoid repeated freeze-thaw cycles.

## Clonality

Monoclonal

## Ig Type

Mouse IgG2a

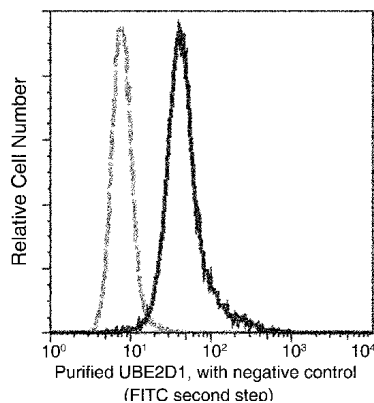
## Applications

FCM

## Dilutions

FCM: 0.5-2 µg/Test

## Validations



UBE2D1 Antibody, Mouse MAb, Flow Cytometry