

Anti-PI3 antibody

Catalog Number: 141983

Product name

Anti-PI3 antibody

Immunogen

[Human PI3/Elafin/WFDC14 \(His Tag\) recombinant protein](#)

Specificity

Human PI3 / Elafin / WFDC14

Antibody description

Rabbit Polyclonal to Human PI3

Preparation

Produced in rabbits immunized with purified, recombinant Human PI3 / Elafin / WFDC14 . PI3 / Elafin / WFDC14 specific IgG was purified by Human PI3 / Elafin / WFDC14 affinity chromatography.

Formulation

0.2 µm filtered solution in PBS

Storage

This antibody can be stored at 2°C-8°C for one month without detectable loss of activity. Antibody products are stable for twelve months from date of receipt when stored at -20°C to -80°C.

Preservative-Free.

Sodium azide is recommended to avoid contamination (final concentration 0.05%-0.1%). It is toxic to cells and should be disposed of properly. Avoid repeated freeze-thaw cycles.

Clonality

Polyclonal

Ig Type

Rabbit IgG

Applications

ELISA, IHC-P

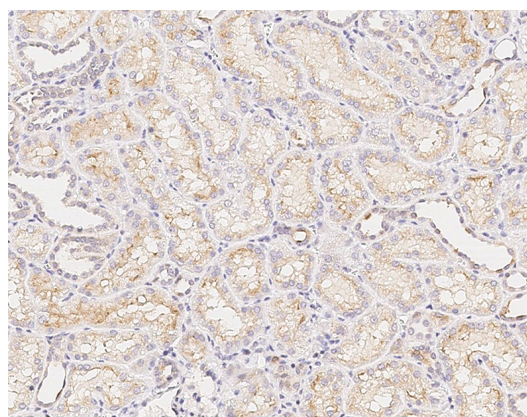
Dilutions

ELISA: 0.1-0.2 µg/mL

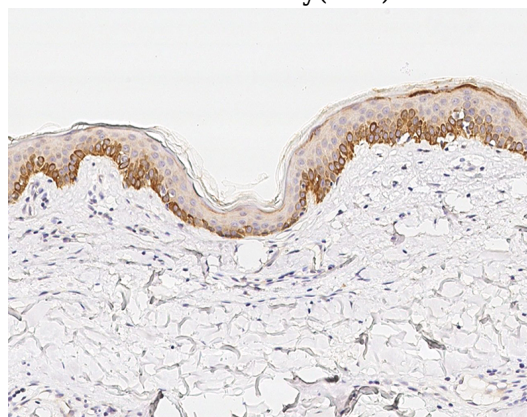
This antibody can be used at 0.1-0.2 µg/mL with the appropriate secondary reagents to detect Human PI3 / Elafin / WFDC14.

IHC-P: 0.1-2 µg/mL

Validations



Human PI3/Elafin/WFDC14
Immunohistochemistry(IHC) 15021



Human PI3/Elafin/WFDC14
Immunohistochemistry(IHC) 15020