

Anti-SUV39H2 antibody



Catalog Number: 141900

Product name

Anti-SUV39H2 antibody

Specificity

Human SUV39H2

Antibody description

Rabbit Polyclonal to Human SUV39H2

Preparation

Produced in rabbits immunized with a synthetic peptide corresponding to the center region of the Human SUV39H2, and purified by antigen affinity chromatography.

Formulation

0.2 μ m filtered solution in PBS

Storage

This antibody can be stored at 2°C-8°C for one month without detectable loss of activity. Antibody products are stable for twelve months from date of receipt when stored at -20°C to -80°C.

Preservative-Free.

Sodium azide is recommended to avoid contamination (final concentration 0.05%-0.1%). It is toxic to cells and should be disposed of properly. Avoid repeated freeze-thaw cycles.

Clonality

Polyclonal

Ig Type

Rabbit IgG

Applications

WB, IHC-P, ICC/IF, IF

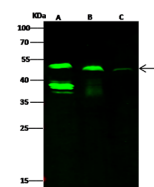
Dilutions

WB: 5-20 μ g/ml

IHC-P: 0.1-2 μ g/mL

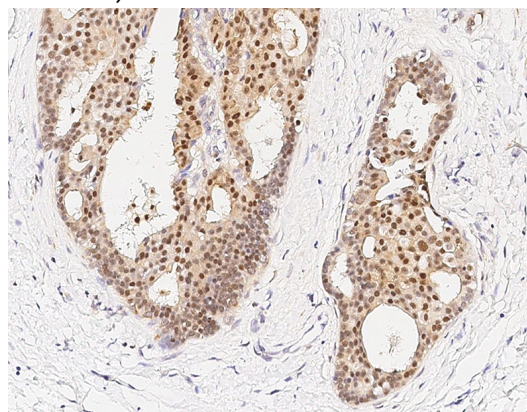
ICC/IF: 0.5-3 μ g/mL

Validations

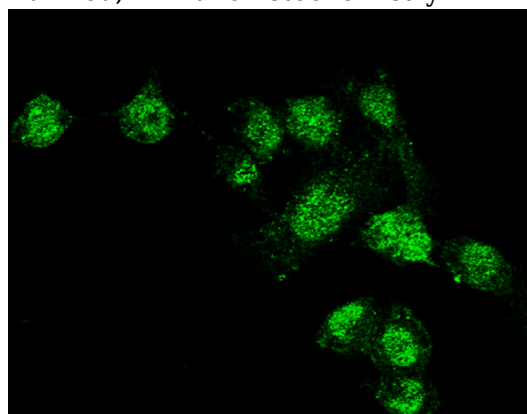


Lanes	A	B	C
Items			
Sample	HepG2 (whole cell lysate)	MCF7 (whole cell lysate)	Mouse kidney tissue lysate
Sample Volume (μ g/lane)	30	30	30
Gel	13% SDS-PAGE reducing gel		
Recommended Concentration	5-20 μ g/ml		
Secondary Antibody	Dylight 800 labeled Antibody to Rabbit IgG (H+L), at 1:5000 dilution.		
	Developed using Odyssey imaging system.		
Explanation	Predicted band size : 47 kDa Observed band size : 47 kDa Additional bands at : 38 kDa (We are unsure as to the identity of these extra bands.)		

SUV39H2 Antibody, Rabbit PAb, Antigen Affinity Purified, Western blot



SUV39H2 Antibody, Rabbit PAb, Antigen Affinity Purified, Immunohistochemistry



SUV39H2 Antibody, Rabbit PAb, Antigen Affinity Purified, Immunofluorescence