

# Anti-SUV39H2 antibody



Catalog Number: 141862

## Product name

Anti-SUV39H2 antibody

## Specificity

Human SUV39H2

## Antibody description

Rabbit Polyclonal to Human SUV39H2

## Preparation

Produced in rabbits immunized with a synthetic peptide corresponding to the center region of the Human SUV39H2. The IgG fraction of the cell culture supernatant was purified by Protein A affinity chromatography.

## Formulation

0.2  $\mu$ m filtered solution in PBS

## Storage

This antibody can be stored at 2°C-8°C for one month without detectable loss of activity. Antibody products are stable for twelve months from date of receipt when stored at -20°C to -80°C.

Preservative-Free.

Sodium azide is recommended to avoid contamination (final concentration 0.05%-0.1%). It is toxic to cells and should be disposed of properly. Avoid repeated freeze-thaw cycles.

## Clonality

Polyclonal

## Ig Type

Rabbit IgG

## Applications

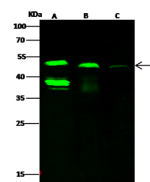
WB, ICC/IF, IF

## Dilutions

WB: 5-20  $\mu$ g/ml

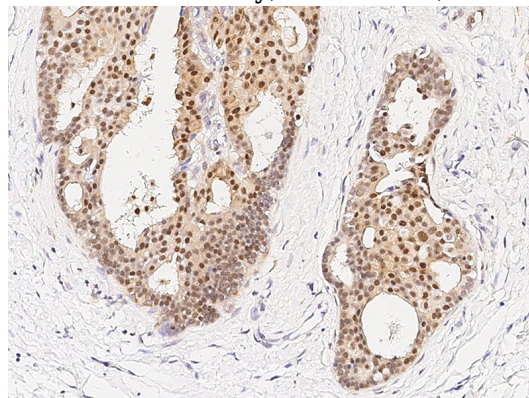
ICC/IF: 0.5-3  $\mu$ g/mL

## Validations

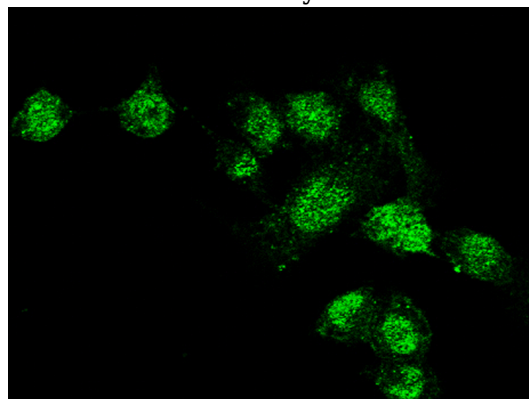


Lanes	A	B	C
Items			
Sample	HepG2 (whole cell lysate)	MCF7 (whole cell lysate)	Mouse kidney tissue lysate
Sample Volume ( $\mu$ g/lane)	30	30	30
Gel	13% SDS-PAGE reducing gel		
Recommended Concentration	5-20 $\mu$ g/ml		
Secondary Antibody	Dylight 800 labeled Antibody to Rabbit IgG (H+L), at 1:5000 dilution.		
Explanation	Developed using Odyssey imaging system. Predicted band size : 47 kDa Observed band size : 47 kDa Additional bands at : 38 kDa (We are unsure as to the identity of these extra bands.)		

## SUV39H2 Antibody, Rabbit PAb, Western blot



## SUV39H2 Antibody, Rabbit PAb, Immunohistochemistry



## SUV39H2 Antibody, Rabbit PAb, Immunofluorescence