

# Anti-CPLX3 antibody



Catalog Number: 141760

## Product name

Anti-CPLX3 antibody

## Immunogen

[Human CPLX3 / Complexin 3 \(His Tag\) recombinant protein](#)

## Specificity

Human CPLX3 / Complexin 3

## Antibody description

Rabbit Polyclonal to Human CPLX3

## Preparation

Produced in rabbits immunized with purified, recombinant Human CPLX3 / Complexin 3 . CPLX3 / Complexin 3 specific IgG was purified by Human CPLX3 / Complexin 3 affinity chromatography.

## Formulation

0.2 µm filtered solution in PBS

## Storage

This antibody can be stored at 2°C-8°C for one month without detectable loss of activity. Antibody products are stable for twelve months from date of receipt when stored at -20°C to -80°C.

Preservative-Free.

Sodium azide is recommended to avoid contamination (final concentration 0.05%-0.1%). It is toxic to cells and should be disposed of

properly. Avoid repeated freeze-thaw cycles.

## Clonality

Polyclonal

## Ig Type

Rabbit IgG

## Applications

ELISA, IHC-P

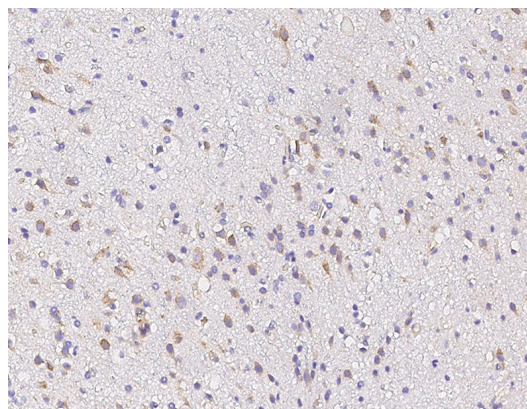
## Dilutions

ELISA: 0.1-0.2 µg/ml

This antibody can be used at 0.1-0.2 µg/ml with the appropriate secondary reagents to detect Human CPLX3 / Complexin 3.

IHC-P: 0.1-2 µg/mL

## Validations



CPLX3 / Complexin 3 Antibody, Rabbit PAb, Antigen Affinity Purified, Immunohistochemistry