

Anti-NSDHL antibody



Catalog Number: 141604

Product name

Anti-NSDHL antibody

Specificity

Human NSDHL

Antibody description

Rabbit Polyclonal to Human NSDHL

Preparation

Produced in rabbits immunized with a synthetic peptide corresponding to the N-terminus of the Human NSDHL, and purified by antigen affinity chromatography.

Formulation

0.2 μ m filtered solution in PBS

Storage

This antibody can be stored at 2°C-8°C for one month without detectable loss of activity. Antibody products are stable for twelve months from date of receipt when stored at -20°C to -80°C.

Preservative-Free.

Sodium azide is recommended to avoid contamination (final concentration 0.05%-0.1%). It

is toxic to cells and should be disposed of properly. Avoid repeated freeze-thaw cycles.

Clonality

Polyclonal

Ig Type

Rabbit IgG

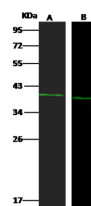
Applications

WB

Dilutions

WB: 5-20 μ g/ml

Validations



Lanes	A	B
Sample (whole cell lysate)	A431	HepG2
Sample Volume (μ g/lane)	30	30
Gel	13% SDS-PAGE reducing gel	
Recommended Concentration	5-20 μ g/ml	
Secondary Antibody	Dylight 800 labeled Antibody to Rabbit IgG (1:1), at 1:5000 dilution.	
Explanation	Developed using Odyssey imaging system. Predicted band size : 42 kDa Observed band size : 39 kDa	

Human NSDHL Western blot (WB) 15412